



LEADING ORGANISATIONS

PROFESSIONAL DIPLOMA

European International University-Paris



READ MORE



LEADING ORGANISATIONS

Advanced Certification Programme

A comprehensive look at best practices in both leadership and people management, 'Leading Organisations' is a Professional Certificate by European International University-Paris (EIU-Paris). Taken from the EIU-Paris MBA programme, this online offering is provided in 32 sections and involves approximately 25 hours of learning. Leads to Leadership Certification

This program also offers opportunity for managers to acquire expert insights, explore leadership concepts, and examine actionable strategies for building the kind of leadership to enable a business, organisation and employees to deliver their optimum performance. This Essentials Leadership programme also aims to provide participants with the ideas, frameworks, and tools required in creating an environment and culture in which individuals feel compelled to innovate and contribute to a transforming work environment.

Curriculum Content developed by Industry Experts under the leadership of Professor Dr. Joel Farnworth - Dean of Management Business School European International University-Paris

Pedagog-Ripe time for
blockchain education

Forbes

**“An investment in knowledge pays the best interest”
Benjamin Franklin**



EUROPEAN
INTERNATIONAL
UNIVERSITY

Forbes **YAHOO!**
FINANCE



PEDAGOG.AC

What I will learn?

- The fundamental start point is that Leadership is different from Management and, although almost all agree to this, research continues to show that businesses and organizations are struggling to identify and use these differences effectively. Business results are suffering as a result.
- Much has been learned in recent years as to how to drive business growth, align and engage a workforce and the leadership capabilities needed to deliver this growth, alignment and engagement, over time. This course updates us on this learning, ensures we are working from experience and best practice and that we avoid the fad and the trend to focus on the fundamentals that matter.
- Designed over a six-month period this course brings together much that we have learned on impactful leadership as opposed to effective management.
- Within Leadership; create and implement strategy, define and embed vision, mission and values, create an engaged workforce, determine key leadership capabilities and lead change.

For more information mail hello@pedagog.ac

Who this course is for:

Target/Suitable attendees for this programme are Business Leaders and Managers (and/or HR professionals) wishing to increase their understanding and capability in leadership best practice. This programme is suitable for corporates and executives in managerial capacity to expand their leadership skills for further growth in their careers

This course is also recommended for professionals willing to advance their career prospects and even freshers who are looking to start their careers as Business Leaders.

Requirements

- This course is delivered in English Language.
- You have to submit the assignment upon completion of the course.



European
Council for
Business
Education



ATHEA
AFFILIATED INSTITUTION



For queries or training in bulk contact
hello@pedagog.ac

LESSONS COVERED:

1. Introduction to Leading Organisation
2. Leadership Capabilities
3. Creating and Articulating Strategy
4. Aligning the Workforce (Performance Management)
5. Engaging a Workforce
6. Mental Capacity (Cognitive)
7. Mental Capacity (Creative)
8. Influencing
9. Driving and Facilitating Change
10. Demands of the Led
11. DEMANDS OF THE LED – COVID 19 IMPLICATIONS AND RESPONSES
12. DotL - Leadership/Management Style
13. DotL - Learning and Development
14. DotL - Career Opportunities
15. DotL - Rewards
16. DotL - Brand (Vision, Mission and Values)
17. DotL - Brand (Diversity)
18. DotL - Brand (Formal and Informal)
19. DotL - Additional
20. Management, Origins of Best Practice
21. Impactive People Management Today
22. Management Capabilities
23. Management and Organisational Structures
24. Management and HR Connections
25. Value and Use of HRBPs to Managers
26. Talent Management (Resourcing/Recruitment)
27. Talent Management (Potential)
28. Talent Management (Development)
29. Manager as Coach
30. Leader/Manager as Mentor
31. Impactive Leader/Manager of Tomorrow
32. L& PM Summary



Course Structure

The programme is structured into 32 units which have further been arranged into “bite-size” lessons for longer retention and convenient application – which is the desired outcome of true education. Each lesson includes reading requirement and a video.

Sample Certificate

THE DUAL CERTIFICATE awarded by European International University, Paris & by Pedagog



Assessment/Reinforcement

This is a Premium Coaching Course; hence the type of assessment is designed not to penalise you for getting anything wrong but to reinforce the principles from each Lesson. This is positive reinforcement and the basis of Academic Coaching. This assessment is based on the premise: What's worth remembering is worth repeating. No real teaching takes place until learning has taken place.

Duration

Maximum duration of the course is six-months. However, this customized course can easily be successfully completed at your own pace and in your own space, even within a few weeks.

Course Fee

The Course is originally priced as 300 USD which includes a certification from European International University, Paris including its Alumni Status after the achievement.

For more information or queries Please mail to hello@pedagog.ac



Watch video 



LEADING ORGANISATIONS

European International University-Paris



1

Sign up at Pedagog.ac

Verify your email and sign in

2

Find Leading Organisations



3

Add to cart

Select "Add to cart" & click buy

Pay with card or paypal

4

Go to the courses tab after logging

Once you have purchased, you will see the course in your dashboard to start studying

5

Completion

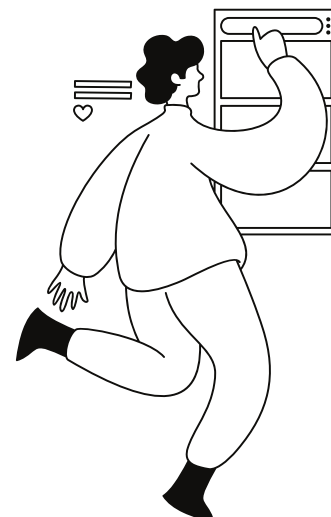
On completion, you will receive certification from Pedagog and European International University-Paris by email.

For Hardcopies students can contact hello@pedagog.ac

Communication

For any queries related to courses, admissions, scholarships, or technical related queries please contact **hello@pedagog.ac** The team usually resolves all the queries within 24-48 hours.

For training this course in bulk please contact **info@pedagog.ac**



Pedagog - Blockchain based innovative learning platform

In Collaboration With
EUROPEAN INTERNATIONAL UNIVERSITY-Paris
59 Rue Lamarck, 75018 Paris, France
www.eiu.ac | www.pedagog.ac

